

## Covering brick, marmoroc brick

Clay bricks, natural colour or with glazed surface, for exterior or interior façades. A complete facade system, including with exterior façade insulation. Assembly and connection details are the same as for Marmoroc Baltic, which is type approved by Sitac according to BBR sections 6:532, 5:63, 5:631 and BKR section 2:111 (Certificate No. 1356/70).

### Product description

The façade is made of clay that has been fired to a high temperature (c. 1,200 °C). The bricks are highly resistant to frost and impact. The bricks are hooked onto vertical profiles of galvanised and varnished steel plate using a Swedish-patented technique (no sealing material or fixing devices required). Individual blocks can be easily replaced if damaged.

### MEASUREMENTS – WEIGHT

Length: 300–1,500 mm

Constructional height: 200–600 mm

Thickness: 24–30 mm

Space requirement: 44–50 mm including 20 mm air space

Blocks with profiles weigh c. 32–43 kg/m<sup>2</sup>

### APPEARANCE

The surface is smooth with matt lustre or glazed. High-gloss glaze can be ordered. The blocks are available in several formats, colours and surface structures. The blocks are fitted with 10 mm horizontal and 2–20 mm vertical joint marking.

Façade patterns can easily be built up using different formats and colours, with square patterns or displaced vertical joints.

### Properties

#### FIRE

Incombustible material.

#### ENVIRONMENT

Made of fired clay.

### Planning guidelines

Supporting profiles are screwed directly to the substrate. A 20 mm air space is created between wall and brick. A complete insulation system is available for exterior façade insulation (see separate report on the page on Marmoroc Support System). There are terminating profiles for windows, doors, foundation and eaves, as well as ventilation bricks for fresh air intakes Marmoroc Brick is a façade system for buildings up to 100 metres.

Assembly instructions and detail drawings for termination to doors, windows, corners, foundation, eaves etc. can be ordered.

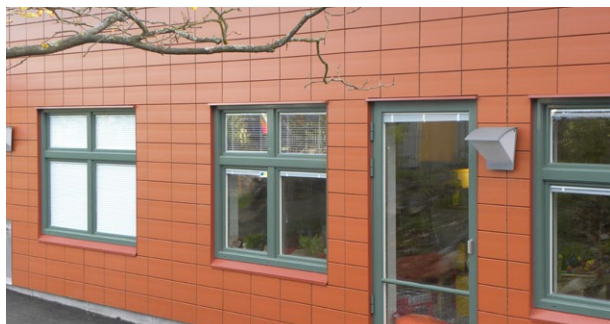
### Marmoroc AB

ADDRESS: Box 274, 731 26 Köping

TEL: 0221-366 00

E-POST: info@marmoroc.com

WEBB: www.marmoroc.com



Nursery school, Stockholm. Block format 400×200 mm



Block format 400×200 mm



Commercial and residential building, Liljeholmen, Stockholm.  
Block format 600×200 mm



Residential houses, Sundsvall. Block format 1,200×400 mm



Residential houses, Kumla. Block format 400×200 mm