

Covering block, marmoroc nordic

Colour concrete blocks for new builds and rebuilding. A complete façade system, including with exterior façade insulation. Type approved by Sitac according to BBR, sections 6:532, 5:63, 5:631 and BKR section 2:111 (Certificate No. 1356/70).

Product description

Façade blocks of white crushed marble, white cement and pigment, with a water repellent outer surface. The blocks are hooked onto vertical profiles of galvanised and varnished steel plate (no sealing material or fixing devices required). Individual blocks can be easily replaced if damaged.

MEASUREMENTS – WEIGHT

Length: 300 and 600 mm.

Constructional height: 100 and 200 mm.

Thickness: 28 and 32 mm.

Space requirement: c. 50 mm including fitting profile and 20 mm air space.

Blocks with profiles weigh 42–48 kg/m².

APPEARANCE

The blocks are coloured throughout, with smooth or slightly textured surface and are available in 20 standard colours. Other colours of surface-coloured blocks can be ordered from the NCS colour range.

The blocks have about 10 mm horizontal and 5–20 mm vertical joint marking. Façade patterns can easily be built up using different formats and colours, with square patterns or displaced vertical joints.

Properties

FIRE

Incombustible material.

ENVIRONMENT

Made of crushed marble, cement and water.

Planning guidelines

The steel profiles are screwed directly to the substrate. A 20 mm air space is created between wall and brick. A complete insulation system is available for exterior façade insulation (see separate report on the page on Marmoroc Support System). A façade system for buildings up to 100 metres.

Assembly instructions and detail drawings for termination to doors, windows, corners, foundation, eaves etc. can be ordered.

Marmoroc AB

ADDRESS: Box 274, 731 26 Köping

TEL: 0221-366 00

E-POST: info@marmoroc.se

WEBB: www.marmoroc.se



Displaced vertical joints



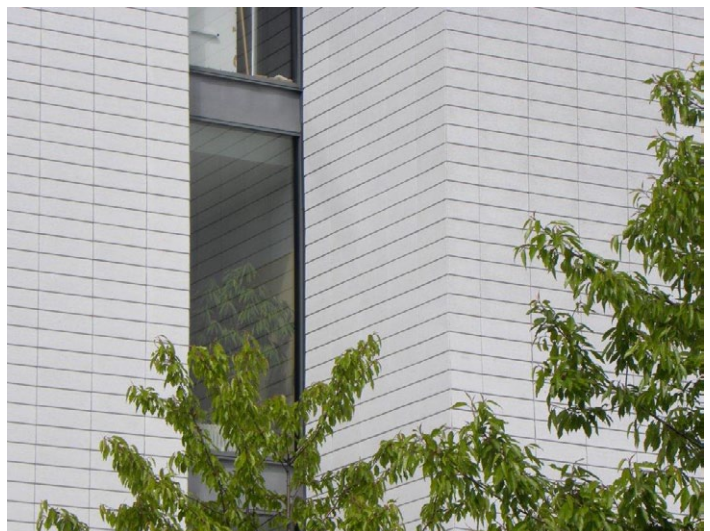
Termination to window



Blocks with smooth surface and colour match for balconies



Façade patterns



Smooth surface with aligned vertical joints